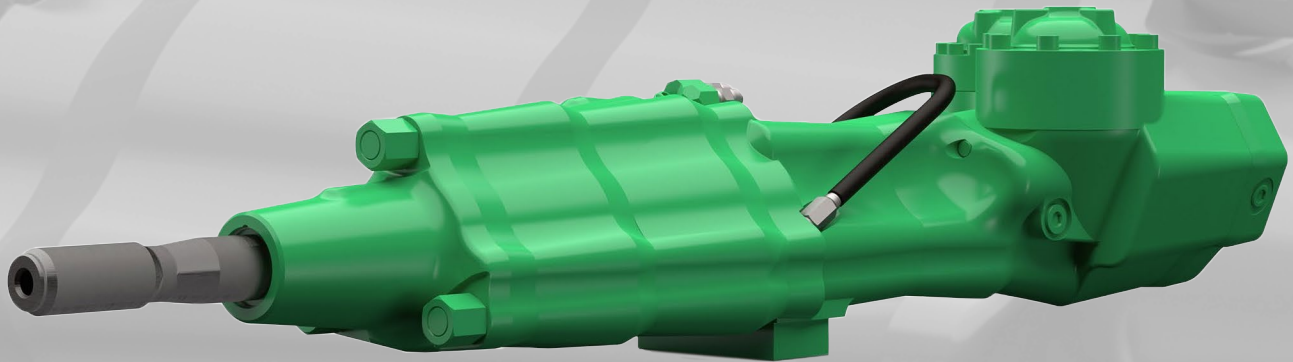


HC 200

Hydraulic Drifter



- Super heavy duty drifter
- Suitable for the largest diameter holes
- Highest rotation torque in its class

Hardworking

- Up to six inch bits for both surface and underground drilling
- Highest energy per blow in the Montabert drifter series
- Robust body designed for extreme applications

Reliable

- Long maintenance intervals and extended wear parts lifespan
- Heavy duty front guide designed for large diameter rods

Efficient

- Large diameter holes with very low energy consumption
- Cost-saving drifter; lower operational costs and cost per cubic meter

| Weight and dimensions | |
|------------------------------|----------|
| Weight | 418 kg |
| Overall length without shank | 1,408 mm |
| Overall length with shank | 1,646 mm |
| Overall width | 410 mm |
| Height | 331 mm |
| Height above shank axis | 102 mm |

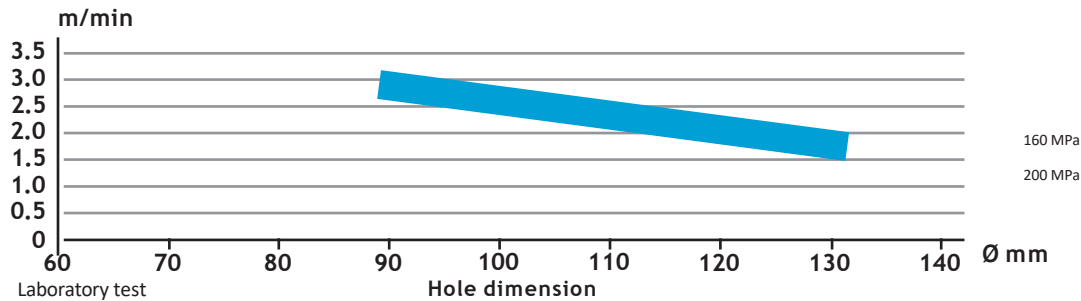
| Impact rating | |
|---------------------------|------------|
| Maximum output | 25 - 30 kW |
| Input range | 47 - 50 kW |
| Percussion flow range | 180 l/min |
| Percussion pressure range | 195 bar |
| Maximum impact frequency | 2,340 bpm |
| Maximum impact energy | 640 J |

Other versions are available; please contact the drilling technical support team for more information.

| Rotation specs | | 200cc |
|------------------------|--|----------|
| Maximum rotation speed | | 125 RPM |
| Oil flow | | 80 l/min |
| Maximum pressure | | 200 bar |
| Maximum torque | | 1850 Nm |

| Flushing flow and pressure | |
|---|----------------------------|
| Water flushing | No water flushing on HC200 |
| Front end lubricating air consumption at 3bar | 300 l/min |

Penetration rate



| Shank adapters | CPN |
|----------------|----------|
| D60 T51M | 86733185 |
| D60 T60M | 86733193 |

| Overhaul kits | |
|-----------------------|--------------------------------|
| Seal kit | CPN depending on configuration |
| 400 impact hours kit | CPN depending on configuration |
| 800 impact hours kit | CPN depending on configuration |
| 1600 impact hours kit | CPN depending on configuration |
| 3200 impact hours kit | CPN depending on configuration |